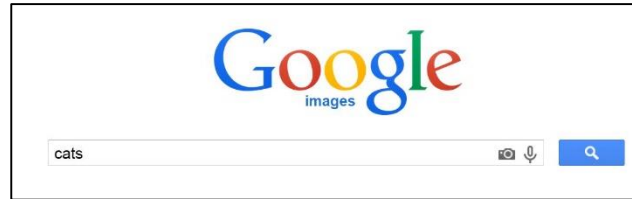


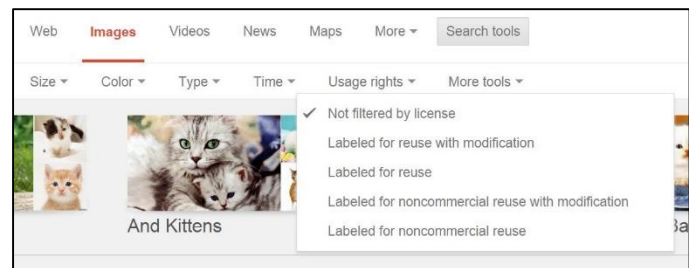
## Using Google Images to Find Images Labelled for Reuse

Note: Google Images is only a search tool. It is not a source. Further research should be carried out to determine the source of the image for proper attribution.

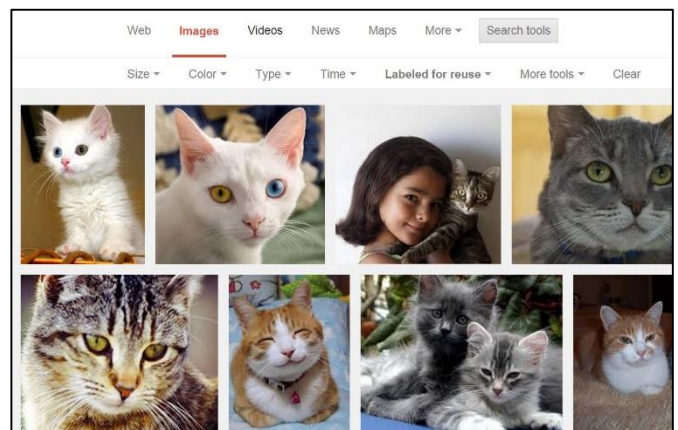
1. Enter a search in the search box.



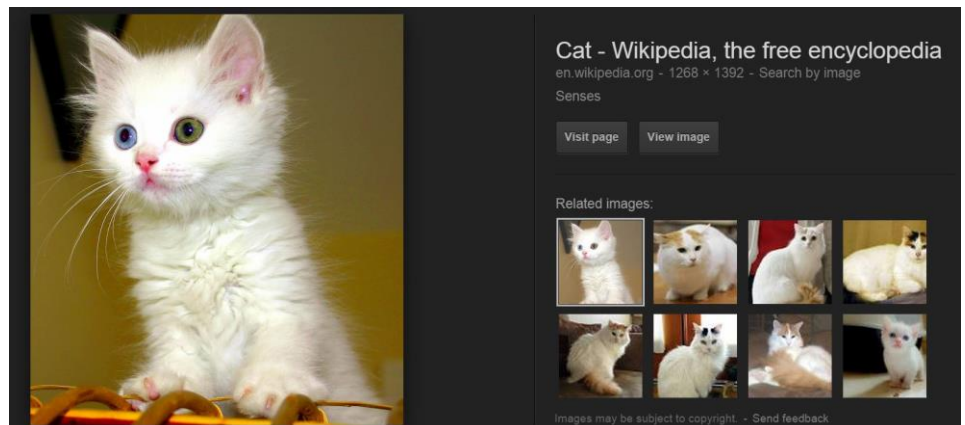
2. Once the images have loaded, click on the “Search Tools” button and use the down arrow beside “Usage Rights” to select the license type—Labelled for reuse.



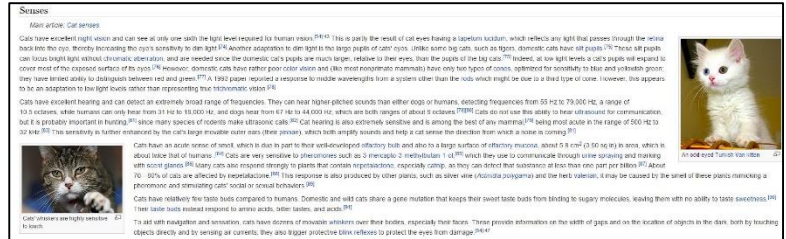
3. Select an image that is “labelled for reuse”. If you scroll over the photo, it will give you brief information regarding the “source” of the image (i.e. Wikipedia, Wikimedia, Public Domain, Pixaby, Flickr, etc.).



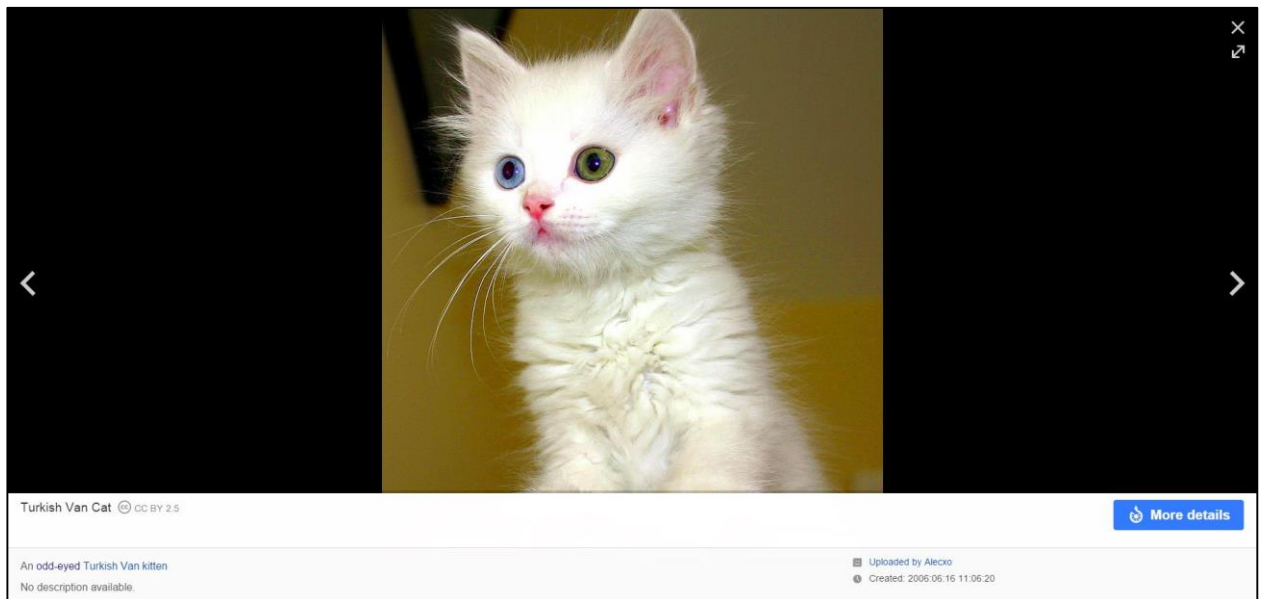
4. Click on the photo and read the text. Click on the “Visit Page” button.



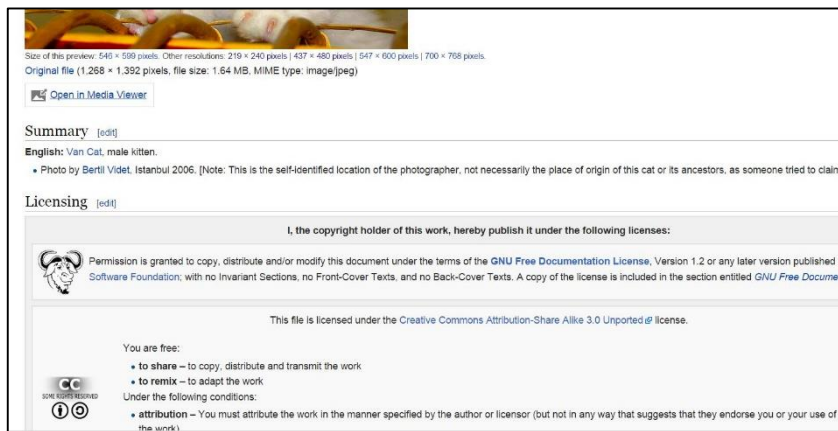
- If directed to a Wikipedia page, you may need to scroll to the article to find the image. When you find it, click on it.



- Look for the title of the image, the license and the photographer or person who uploaded the image. Note the information.



- If need be, dig deeper by clicking on the “More Details” button. Note the license information and “save the image as”...to your Pictures File.



8. Insert the photo to your PPT, website, or report and attribute with the title of the photo, photographer/downloader, license (if possible), and URL link to the photo.

Note: Alecxo is the uploader of the photo. If you look a little deeper, you will find the original photographer—Bertilvidet.



Turkish Van Cat; uploaded by: Alecxo  
Source: Wikipedia CC-BY-2.5  
[http://en.wikipedia.org/wiki/Cat#mediaviewer/File:Turkish\\_Van\\_Cat.jpg](http://en.wikipedia.org/wiki/Cat#mediaviewer/File:Turkish_Van_Cat.jpg)