

# Using Flickr to Find Creative Commons Images

Note: Flickr is both a source and a search tool.

Cats

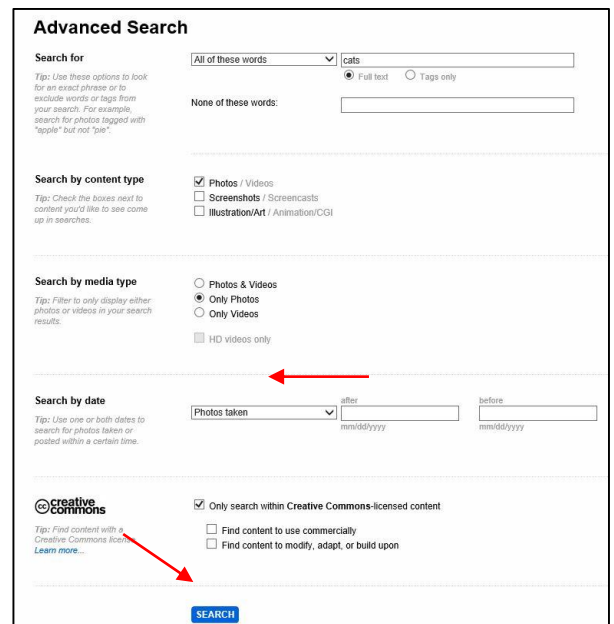
1. Enter a search in the search box. You do not need to be signed in.



2. Once the images have loaded, click on the "Advance Search" link under "Sign in".



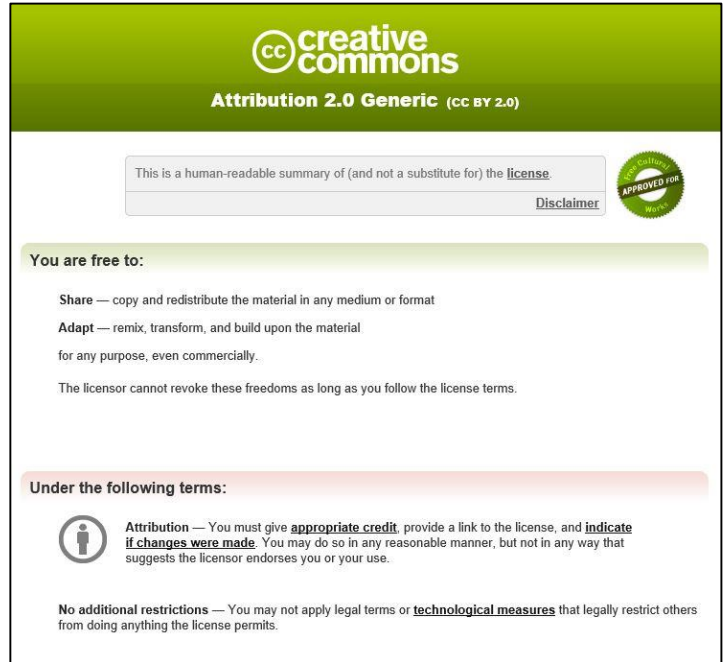
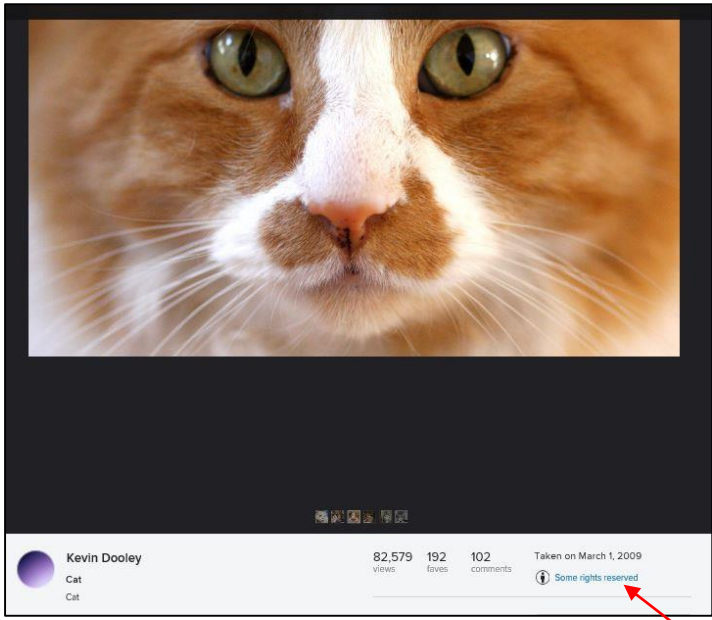
3. To further limit your search,
  - a. Place a checkmark in front of the media type—"Photos"
  - b. Place a checkmark in front of the license type—"Only search within Creative Commons license content"
  - c. Click on—"Search"



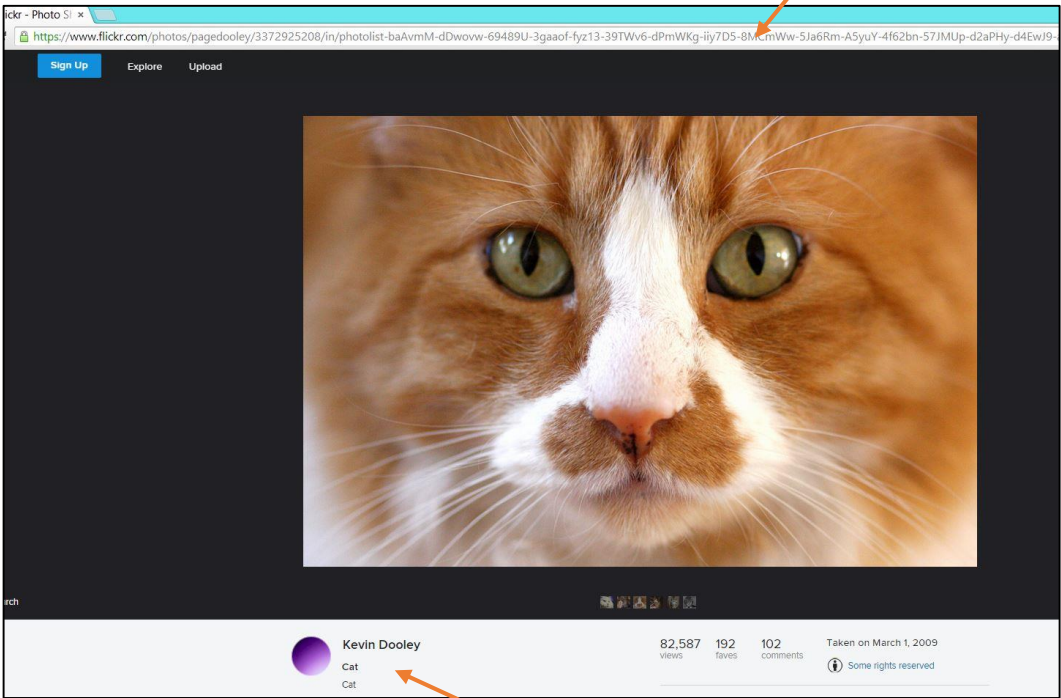
4. Select the photo that you want to use and click on it.



5. Click on the “license”—usually says “*some rights reserved*” to confirm the Creative Commons license.



6. Go back to the photo and note the following attribution information:
  - a. Title of the photo if given
  - b. Name of the photographer
  - c. URL at the top of the page. If the URL is really long, you may want to shorten it using Google URL shortener or TinyURL.



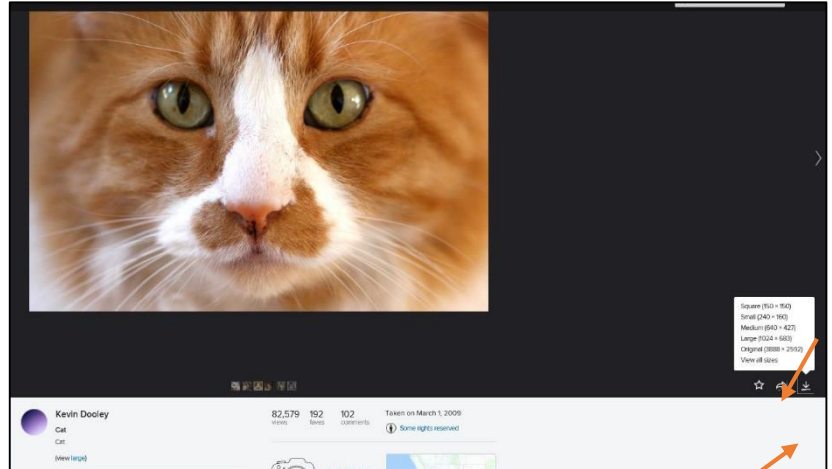
Title: Cat

Photographer: Kevin Dooley

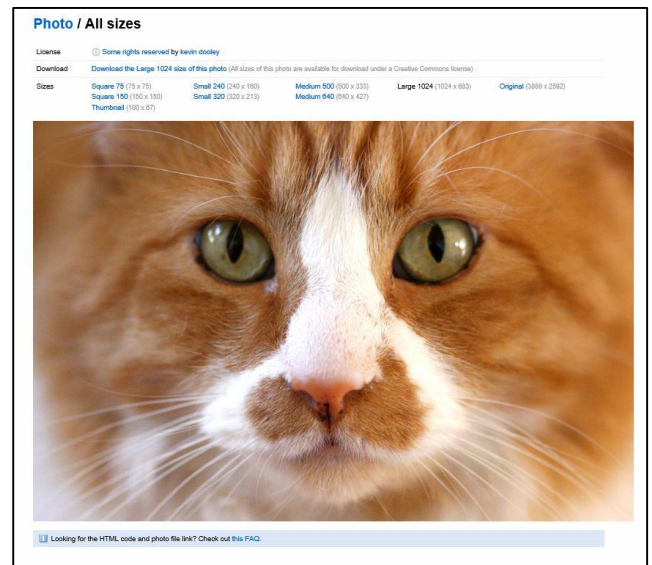
URL:  
<https://www.flickr.com/photos/pagedooley/3372925208>

Note: you generally do not need the long URL part that comes after the number.

7. Download the image
  - a. Click on the symbol to the far right that shows the image sizes. Sometimes it's a down arrow over a line; sometimes it's 3 dots
  - b. Select "view all sizes"



- c. Select the size you wish to download (i.e. Medium 500) and then click on link "Download the Medium 500 size of this photo". You will need to save the image into a "picture" file.
  - d. Insert the photo into your document, website, blog, etc.



8. Insert the photo into your document and attribute accordingly. Consider using an attribution helper such as the bookmarklet—Flickr CC Attribution Helper—or the Imagecodr.org website (see separate handouts).

## Common Attribution Formats:

### 9. WORD Document

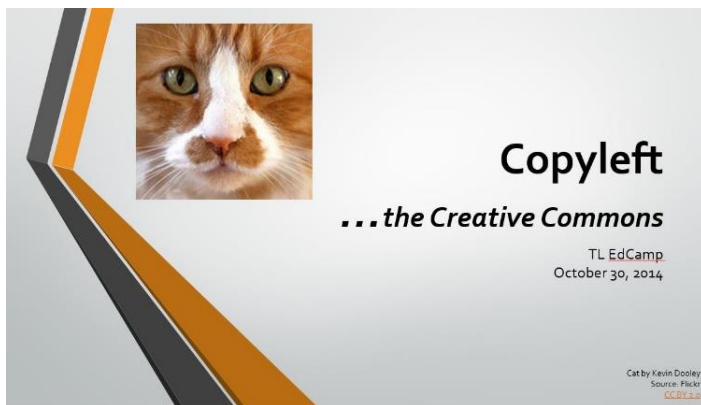
- Add attribution under the image
- You could also number the image and include a citation list at the back of a longer report.



Cat by Kevin Dooley  
Source: Flickr, CC-BY-2.0  
<https://www.flickr.com/photos/pagedooley/3372925208>

### 10. PowerPoint

- Insert the image
- Insert a text box and add the title, author, source and license. Link the full URL to the license so that a person could click on the link and be taken directly to the image in Flickr



URL is linked to the license. It is an active link.



Full URL (or could use a shortened URL) and it is pasted under the license. Make sure to leave a space after the URL to make it a live link.

11. Website/Blog, etc.

- Use **Imagecodr.org** or **Flickr CC Attribution Helper** to get the embedded code for the photo & attribution
- Copy the embedded code and paste the code into the website/blog. You will need to use the widget for inserting <html> code.

**Image Attribution (Imagecodr.org)**



**Flickr CC Attribution Helper**

